

## EP-073

### 표피낭종을 모사한 인종의 기저세포암: 중심점 소견을 동반한 증례 보고

(Philtrum basal cell carcinoma with a central  
spot : A mimic of epidermal cyst)



순천향대 구미병원  
백진오, 위서영\*

**Purpose:** Basal cell carcinoma (BCC) presents with diverse clinical features, occasionally leading to misdiagnosis as benign lesions. While epidermal cysts are common on the face, BCC can simulate their appearance, including the presence of a central punctum-like spot. We report a case of BCC on the philtrum that was clinically indistinguishable from an epidermal cyst upon initial presentation. Such clinical mimicry may obscure the possibility of an underlying malignancy during initial evaluation.

**Methods:** A 62-year-old female presented with a persistent 0.2 × 0.2 cm nodule on the philtrum (Fig. 1). The mass exhibited a distinct central black spot, remarkably mimicking the classic punctum of an epidermal cyst. Under local anesthesia, an excisional biopsy was performed to ensure definitive diagnosis (Fig. 2).

**Results:** Histopathological analysis of the philtrum lesion revealed BCC. Microscopic evaluation with H&E staining demonstrated characteristic nests of basaloid cells exhibiting peripheral palisading and prominent peritumoral clefting (Fig. 3). The postoperative course was uneventful, with no immediate functional or surgical complications observed.

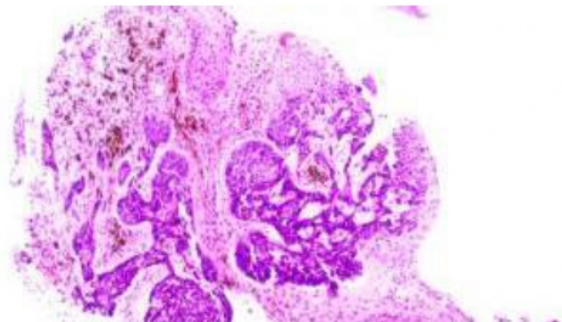
**Conclusions:** The presence of a central spot should not be considered pathognomonic for an epidermal cyst, as BCC can present with remarkably similar features. Clinicians should not rely solely on clinical appearance; instead, they must perform an excisional biopsy for persistent nodules to confirm the diagnosis and provide early management. Even when a lesion strongly resembles a benign epidermal cyst, the possibility of malignancy such as BCC should always be considered during clinical evaluation.



**Fig. 1** The mass on the philtrum exhibited a distinct central black spot measuring 0.2 × 0.2 cm, mimicking the classic punctum of an epidermal cyst.



**Fig. 2** The specimen measures approximately 0.4 × 0.4 cm. The central black spot, which clinically mimicked a punctum, is clearly visible on the surface of the excised nodule.



**Fig. 3** H&E staining reveals nests of basaloid cells with characteristic peripheral palisading and peritumoral clefting, confirming the diagnosis of basal cell carcinoma.