

EP-208

**HPV 연관 음낭 Bowen 병: HPV
관련 편평상피암종 발생을
시사하는 증례**

(HPV-Related Bowen's Disease of the
Scrotum: A Case Highlighting HPV-
Associated Squamous Carcinogenesis)



동국대학교 의과대학
성형외과학교실¹

한승민¹, 이준호*¹

Purpose: To report a rare case of HPV-related Bowen's disease of the scrotum and to highlight the potential etiologic role of human papillomavirus (HPV) infection in scrotal squamous carcinoma in situ.

Methods: A 74-year-old man presented with a scrotal lesion that was initially diagnosed as favor Bowen's disease on punch biopsy. Wide excision with intraoperative frozen section control and dartos fascia-based advancement flap coverage was performed under local anesthesia. p16 immunohistochemistry was carried out to evaluate high-risk HPV association, based on emerging evidence that HPV can contribute to genital and scrotal squamous carcinogenesis.

Results: Final histopathology confirmed HPV-related squamous carcinoma in situ (Bowen's disease) with strong p16 expression. The tumor measured 1.0 × 0.9 × 0.2 cm, and all margins were free of tumor, including a 3 mm deep margin. The postoperative course was uneventful, with complete wound healing and no local recurrence during short-term follow-up.

Conclusion: HPV-related Bowen's disease of the scrotum is extremely rare but supports the growing concept that HPV may play a causal role in a subset of scrotal squamous cell neoplasms. Routine consideration of HPV testing, including p16 immunostaining, may be useful in scrotal in situ or invasive squamous lesions for etiologic assessment, patient counseling, and surveillance planning.



Fig 1. Clinical course

- A. Preoperative photograph : A solitary black nodule with erosion on the scrotal skin.
- B. Intraoperative photograph : Completed wide excision with dartos fascia-based advancement flap reconstruction.

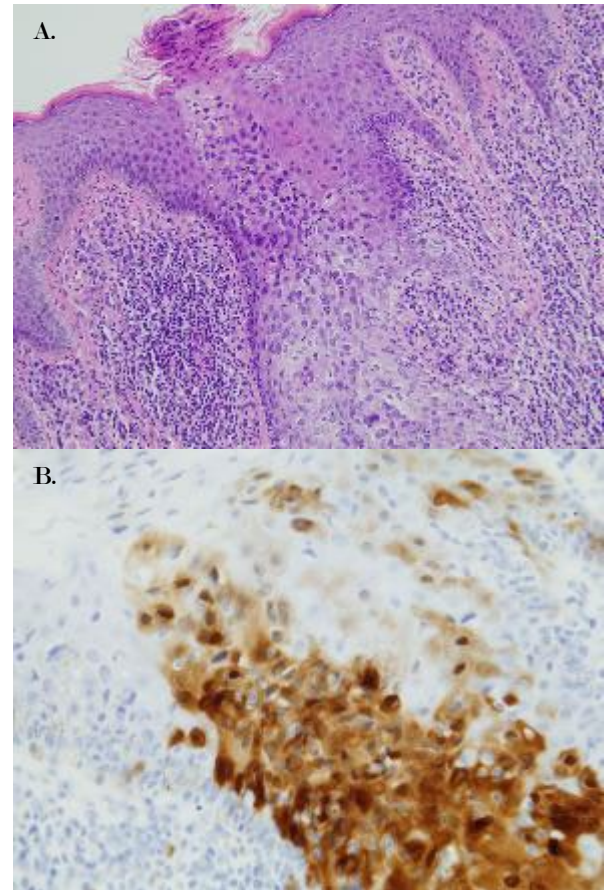


Fig. 2. Histopathology

- A. H&E stain (×200) : Full-thickness atypical keratinocytes consistent with HPV-related Bowen's disease
- B. p16 IHC (×400) : Strong diffuse p16 positivity supporting high-risk HPV-related squamous carcinoma in situ.